

# ARTBUILD

BRUSSELS | PARIS | LUXEMBOURG

WOOD ACADEMY

10/2021

TIMBER: WHY... AND HOW?

Steven WARE/Christian JADOT

# ARTBUILD







TEAM	90	STUDIOS	
PARTNERS .....	6	BRUXELLES .....	55
PROJECT LEADERS .....	20	PARIS .....	25
OTHERS .....	64	LUXEMBOURG .....	10

#### CHIFFRES D'AFFAIRES / TURNOVER

2018 .....	9,13 M€
2019 .....	11,82 M€
2020 .....	11,14 M€

#### TERRITOIRES 2020 / TERRITORY

BELGIQUE .....	27 %
FRANCE .....	48 %
LUXEMBOURG .....	25 %

#### SECTEUR 2020 / SECTORS

SANTÉ / HEALTH .....	25 %	RÉSIDENTIEL / HOUSING .....	17 %
TERTIAIRE / OFFICES .....	43 %	COMMERCES & LOISIRS /	
		RETAIL & LEISURE .....	15 %

# TIMBER: WHY ... AND HOW?

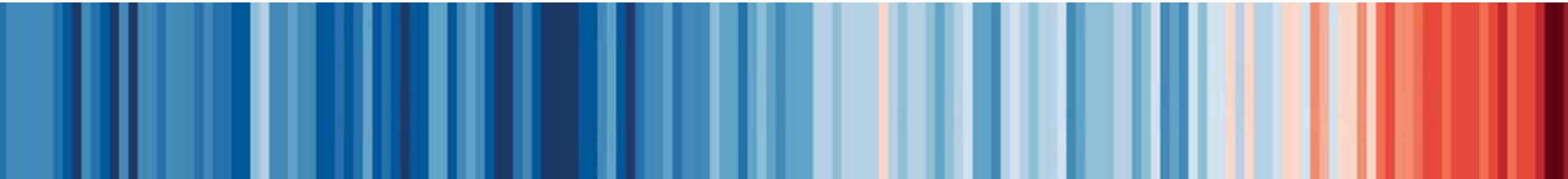
WoodAcademy

Octobre 2021



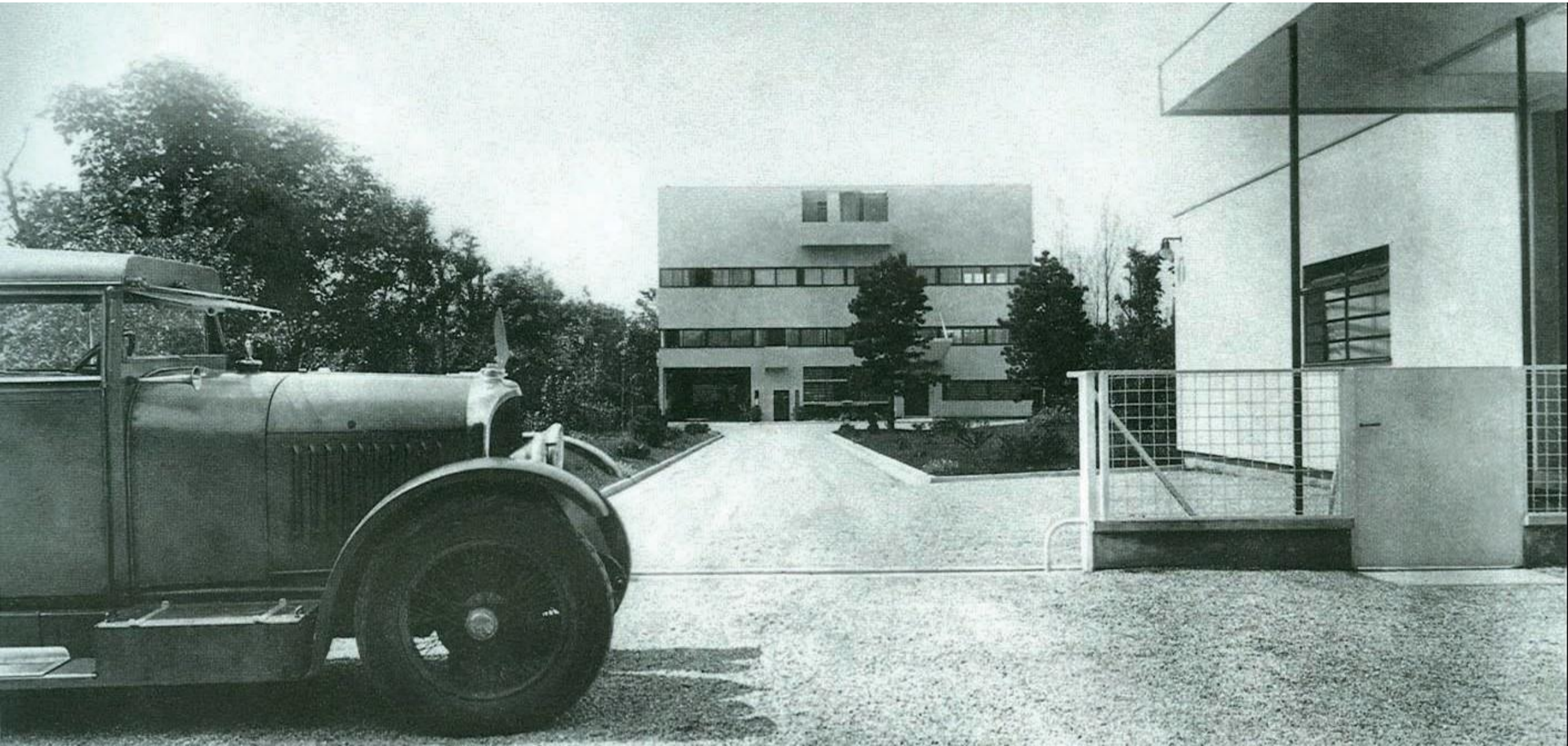
# THE EARTH'S THERMOMETER

ED. HAWKINS



20<sup>th</sup> CENTURY PARADIGM: BUILDINGS AS MACHINES

FONDATION LE CORBUSIER





BUILDINGS LIKE TREES

SOFIA ANTIPOLIS / NICE (F)







# BIOINSPIRATION

## TIMBER AS A CATALYST FOR A NEW PARADIGM

- Bioresources
- Bioeconomy
- Biomimimcry
- Biodiversity



# OPALIA, AN TIMBER OFFICE BUILDING AND EARLY ADOPTER

OPALIA, PARIS (F)





## OPALIA, AN TIMBER OFFICE BUILDING AND EARLY ADOPTER

OPALIA, PARIS (F)











# BIOPHILIA

25 % of Europeans  
suffer from stress in the workplace

It takes 30 minutes  
on average to recover from a stressful episode



AN EXEMPLARY COMMISSION? AN EXEMPLARY PROJECT

WOODEN, LEUDELANGE (L)









# INNOVATION

WOODEN, LEUDELANGE (L)





BIOCLIMATIC DESIGN

WOODEN, LEUDELANGE (L)





BIOPHILIC APPROACH

WOODEN, LEUDELANGE (L)





FLEXIBLE WORKSPACES

WOODEN, LEUDELANGE (L)





HEALTHY ENVIRONMENTS

WOODEN, LEUDELANGE (L)





BUILDING ANATOMY

WOODEN, LEUDELANGE (L)





LUMIÈRE NATURELLE

WOODEN, LEUDELANGE (L)



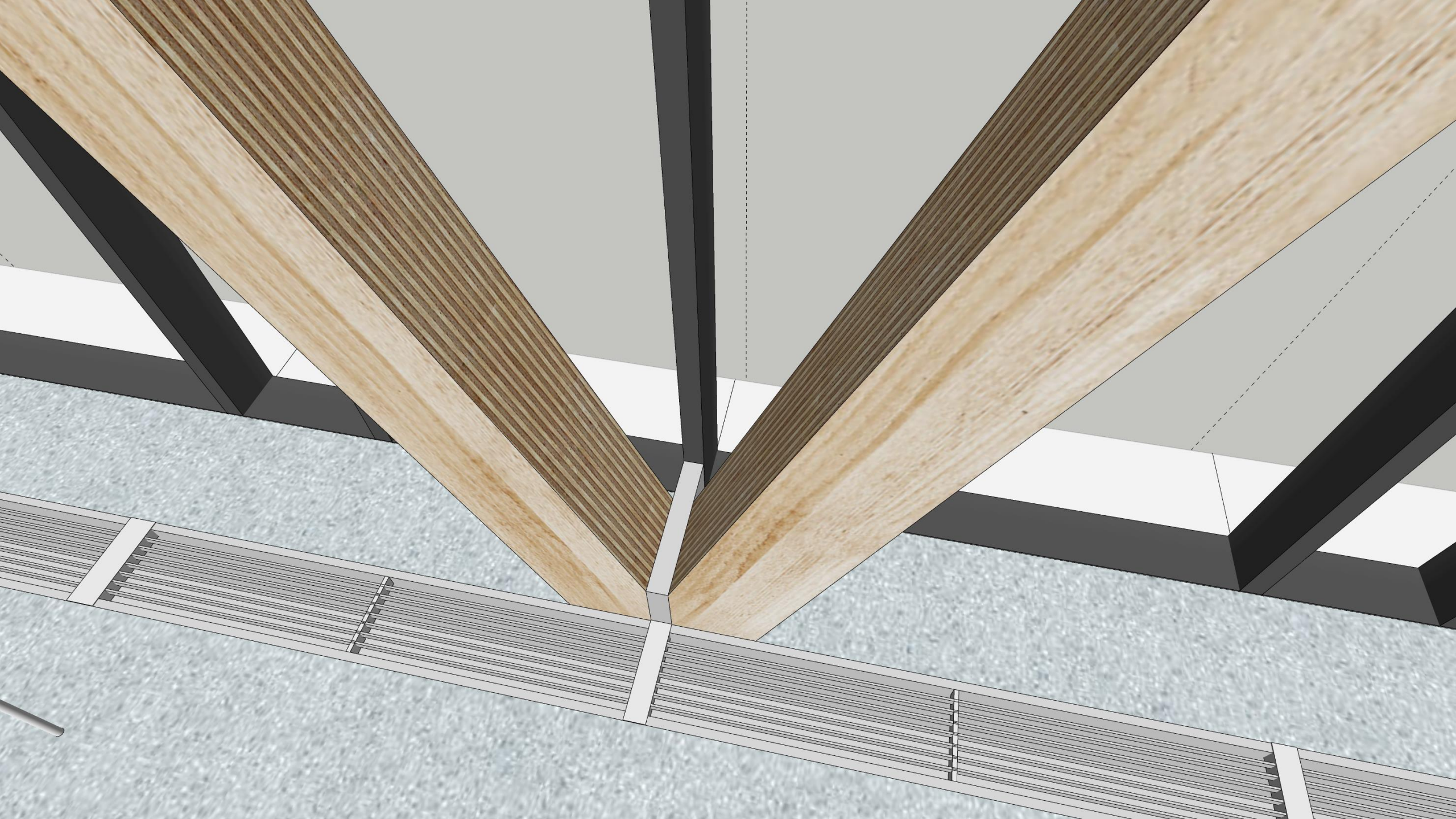


## PROTECTIONS SOLAIRES EXTÉRIEURES

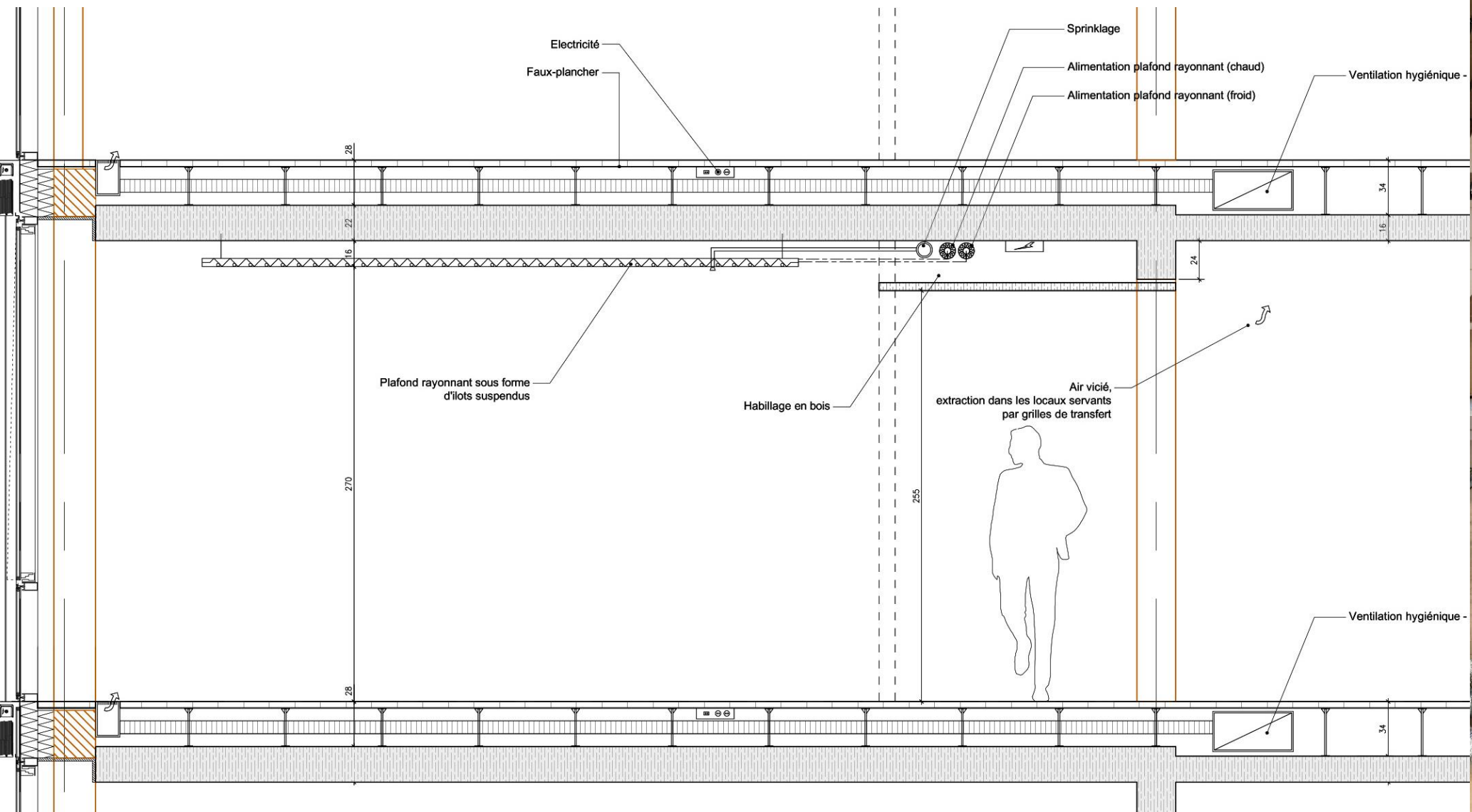
WOODEN, LEUDELANGE (L)













# POTEAUX – POUTRES BLC



1

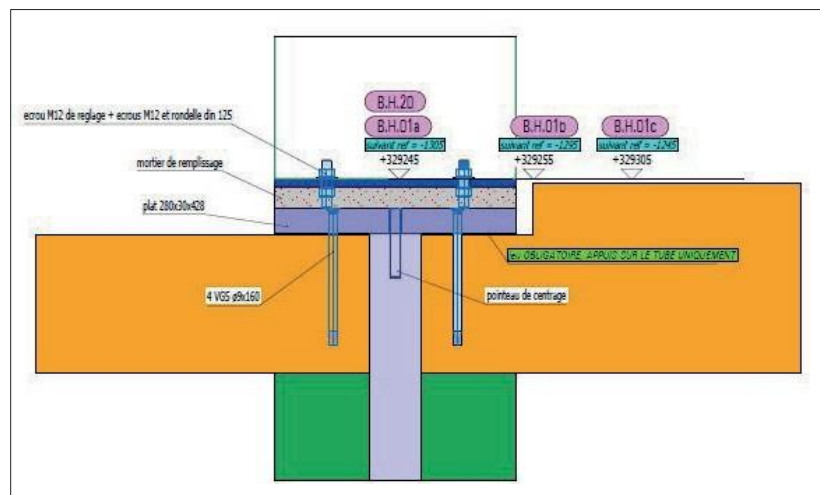
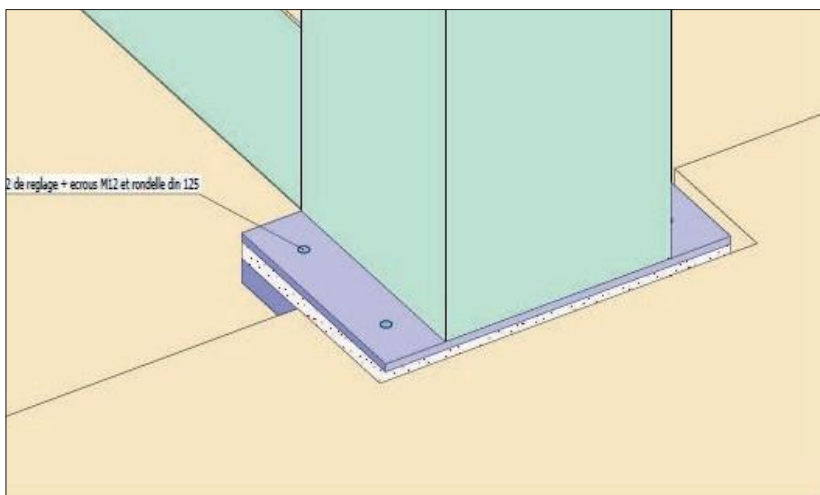
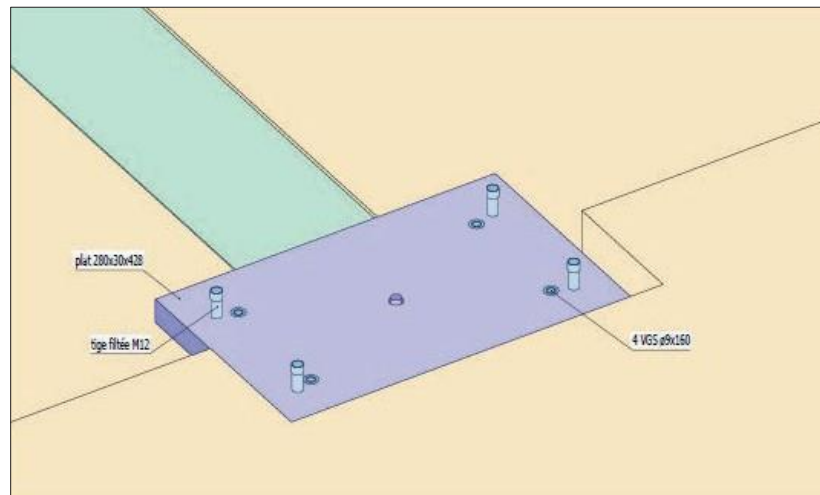
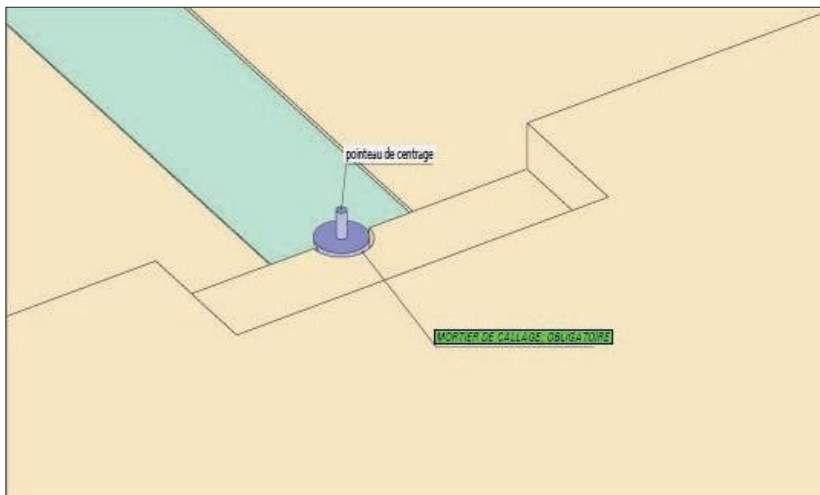


# POUTRES BLC CONTINUES DE 13,5 M SUR 5 APPUIS



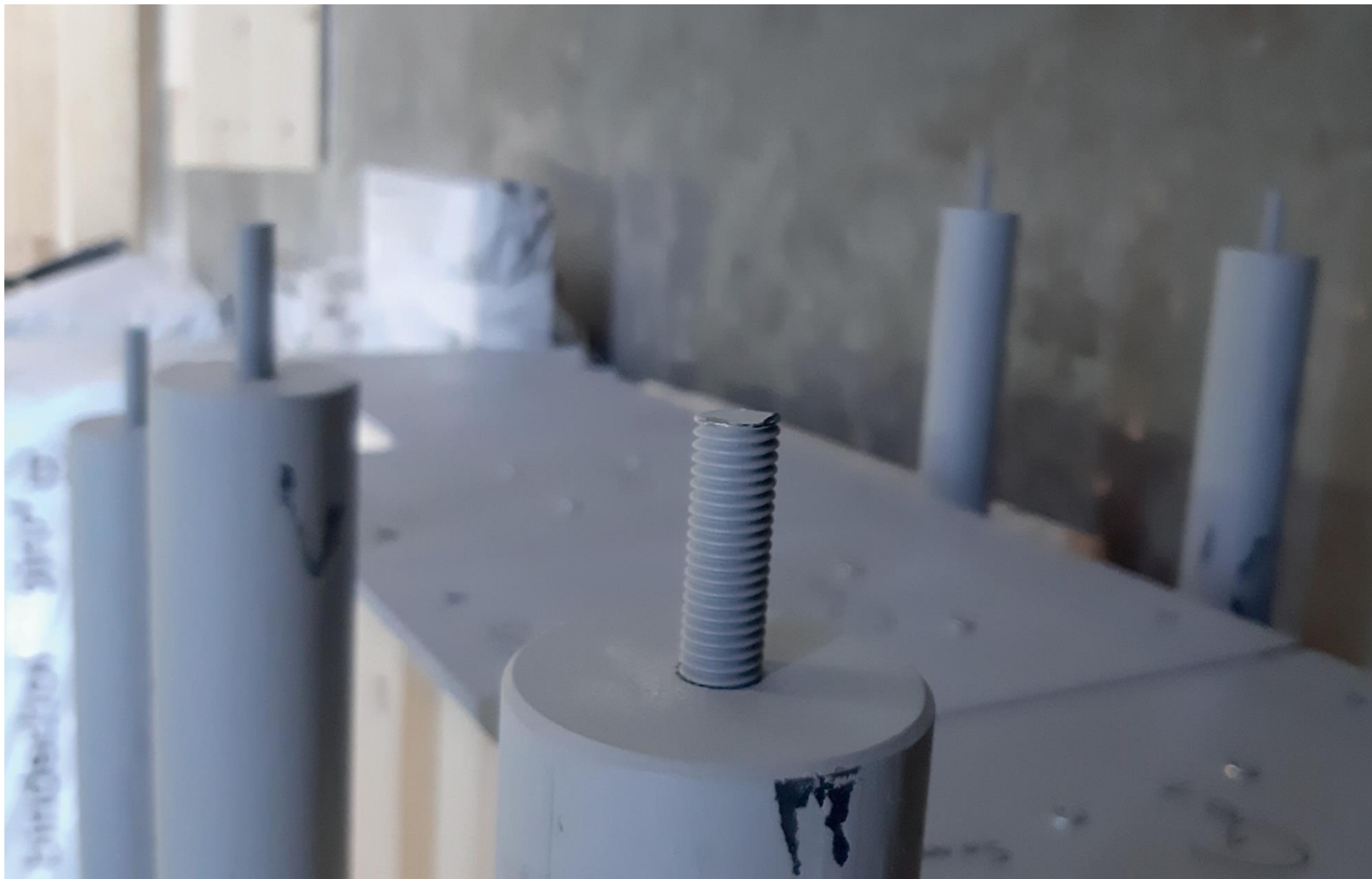


# FERRURES DE PIED AVEC RÉGLAGE



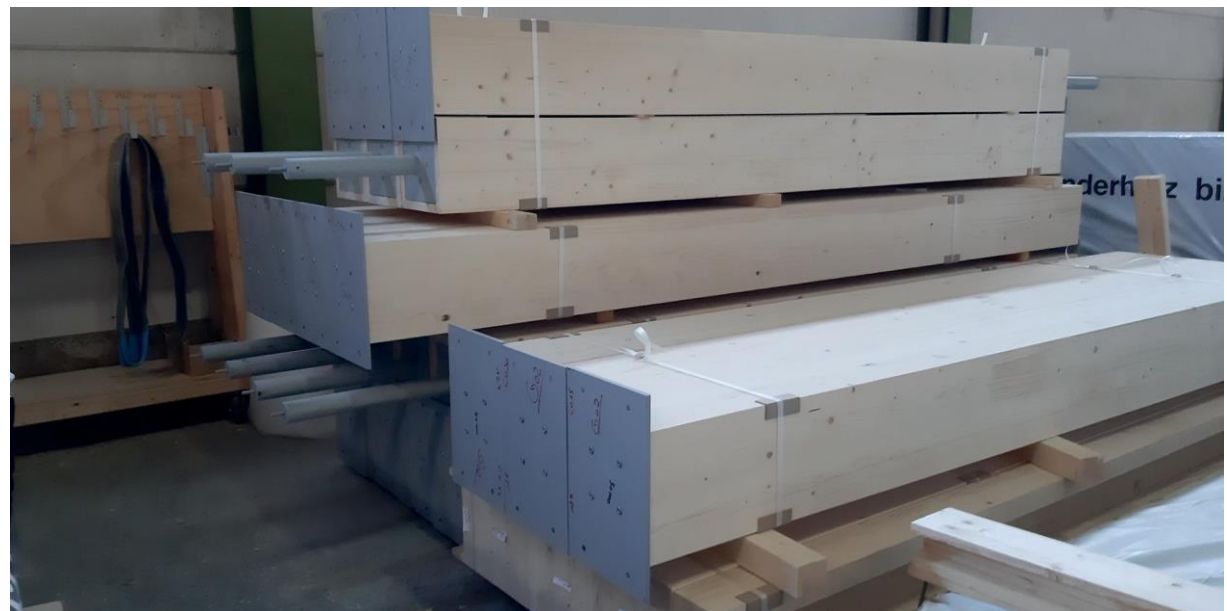


# FERRURES DE PIED AVEC RÉGLAGE



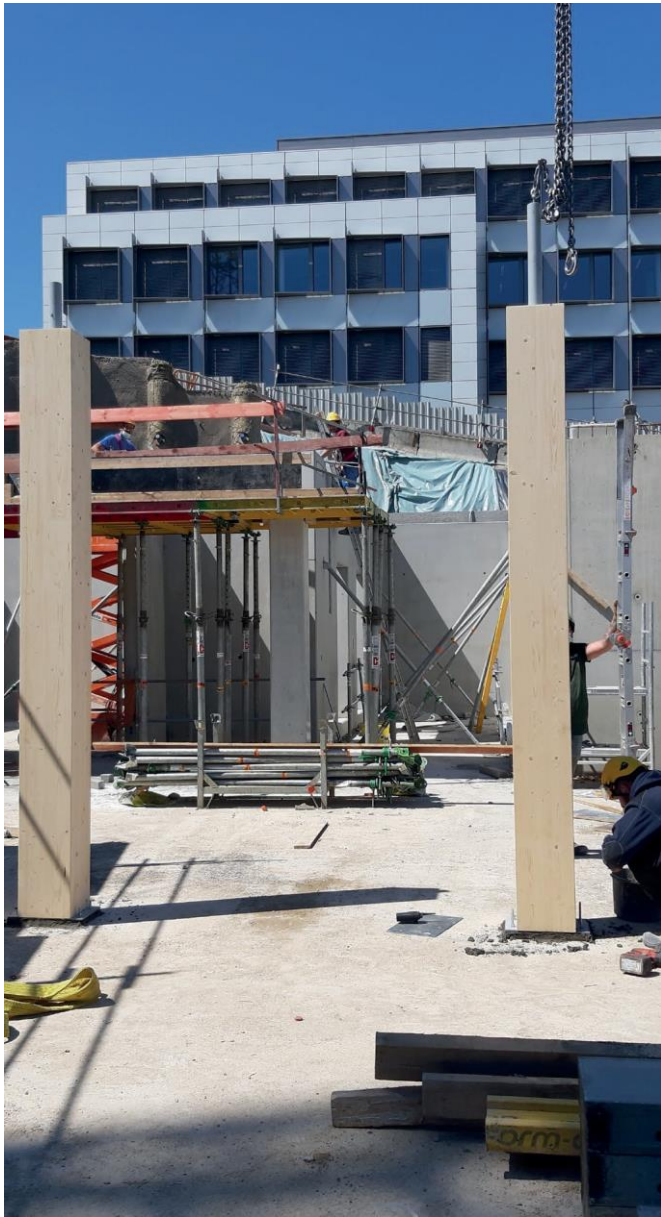


# MISE EN PLACE DES FERRURES EN USINE + TRANSPORT



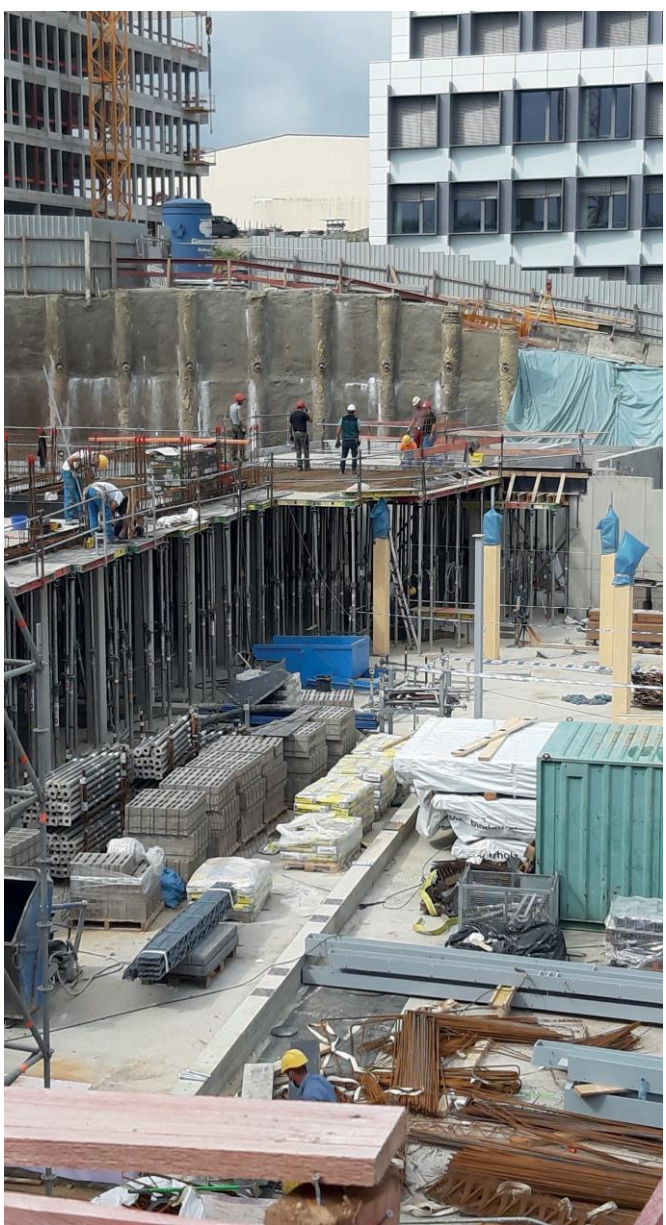


# MISE EN PLACE DES PREMIÈRES COLONNES





# PROTECTION DES TÊTES DE COLONNES : PIÈGES A EAU






PERCEMENTS POUR LES TECHNIQUES





## PLANCHERS CLT

A photograph showing a cross-section of a curved concrete structure under construction. A thick, light-colored concrete slab is being poured into a formwork. The formwork is supported by a series of wooden beams and brackets. The concrete surface is smooth and has a slightly textured appearance. A large white number '2' is overlaid on the bottom right of the image.

2

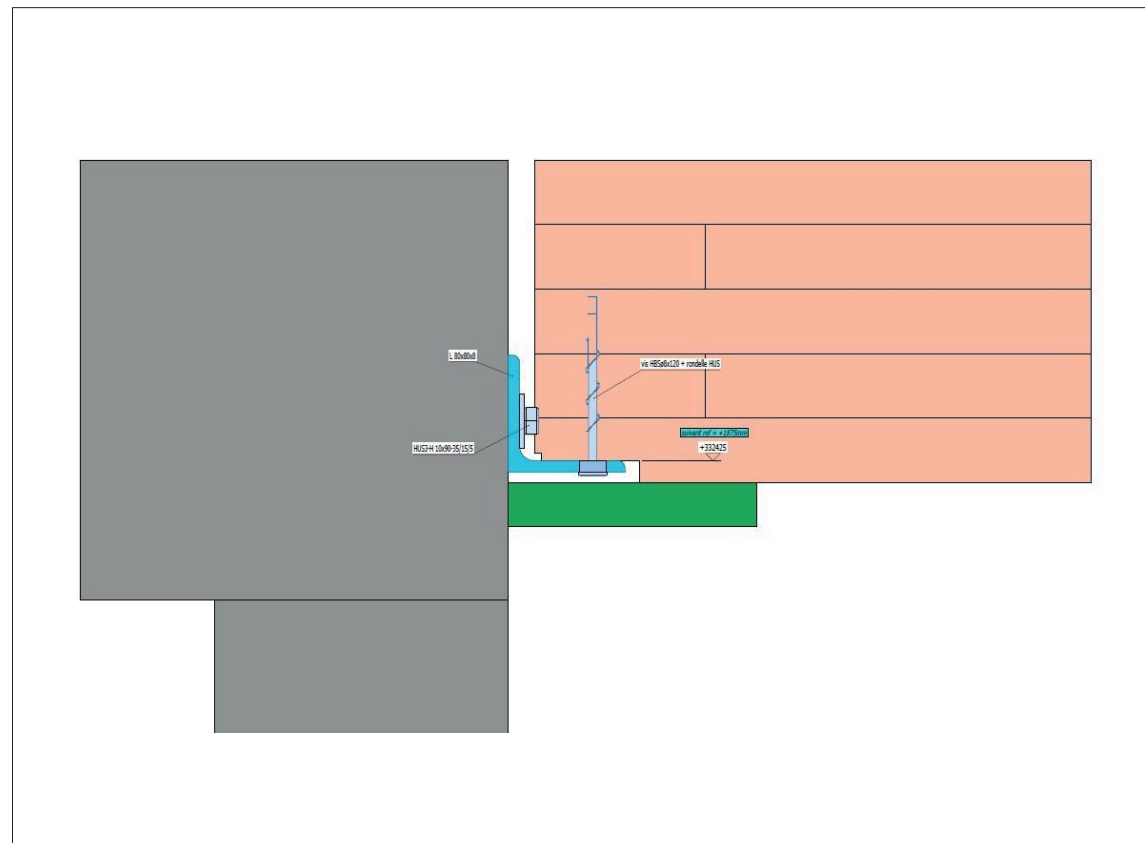
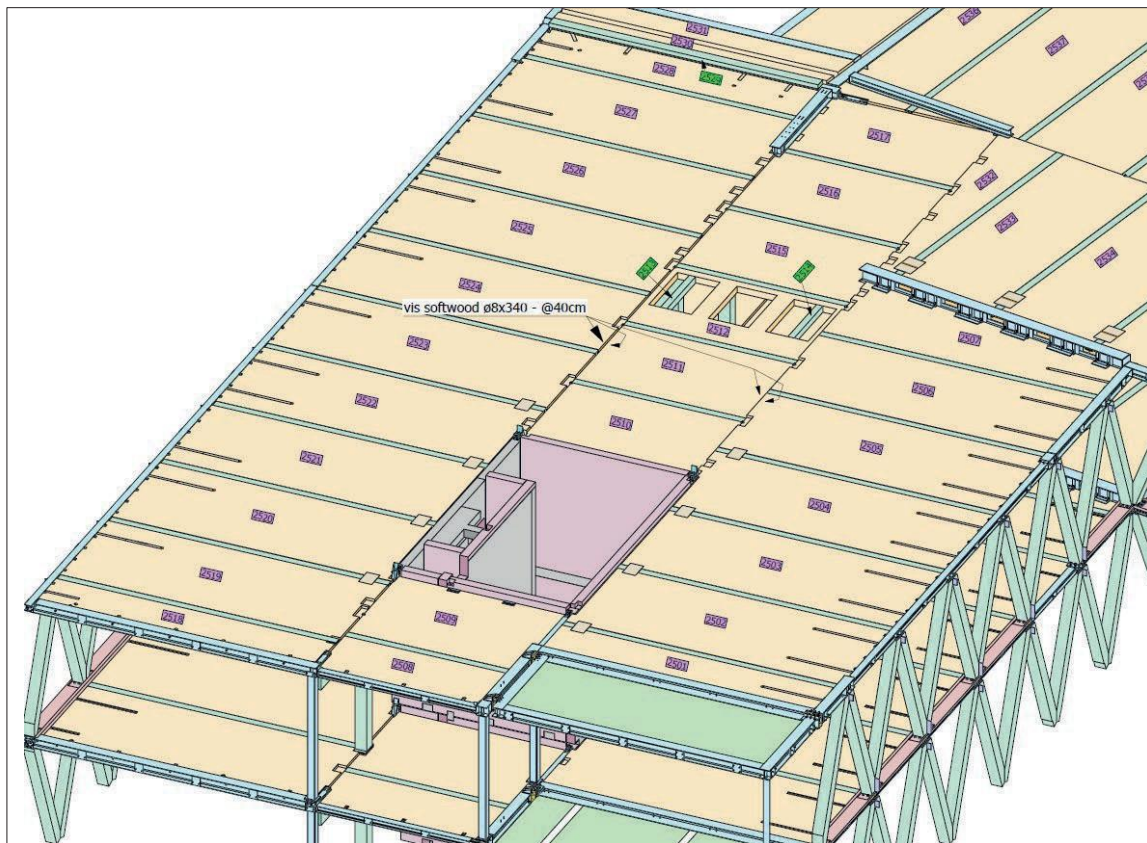


# JONCTIONS DES PLANCHER CLT : ALIGNEMENT AVEC V



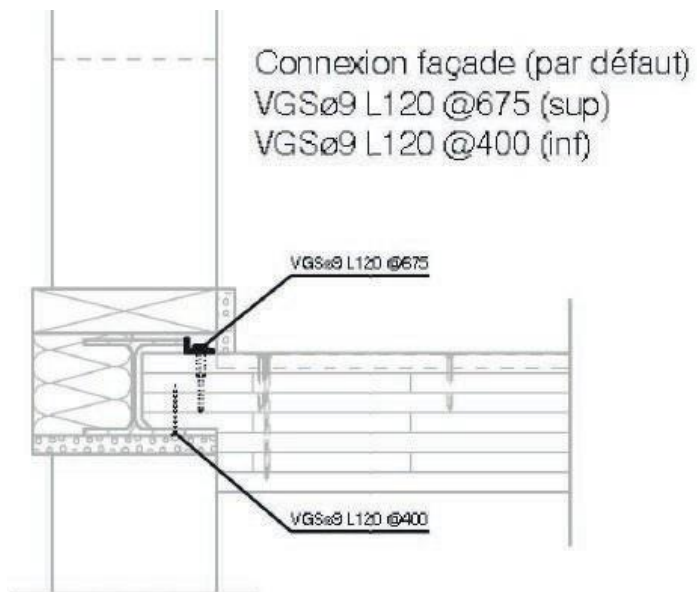


# PRINCIPE D'APPUI DES PLANCHERS CONTRE LES NOYAUX BÉTON





# APPUI DES PLANCHERS CLT SUR LES FERMES TREILLIS

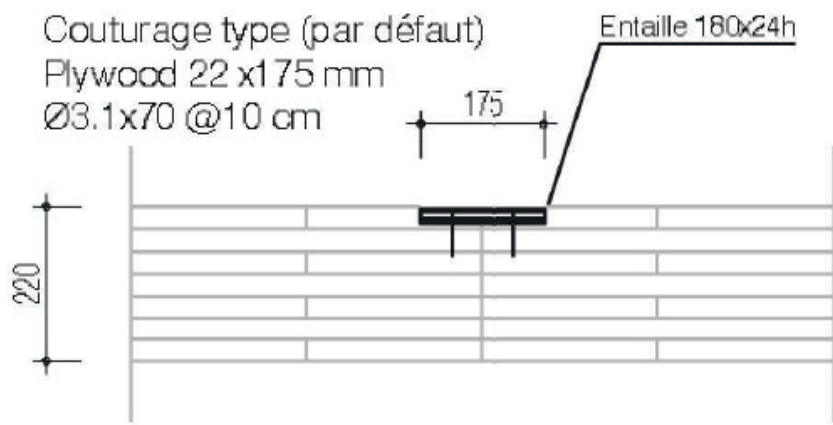


**GENE 02.0**

Ech. 1/20



# PRINCIPE DE COUTURAGE DES PLANCHERS CLT



**GENE 01**  
 Ech. 1/20







## FERMES TREILLIS

3



# FIXATIONS DES V EN BOIS SUR LES MEMBRURES MÉTALLIQUES





ANGLE DE LA FERRURE = UNIQUEMENT 4 VIS PAR ÉLÉMENT





# ASSEMBLAGE EN USINE DES FERMES TREILLIS SUR GABARITS





# CHARGEMENT SUR RACKS DES FERMES TREILLIS



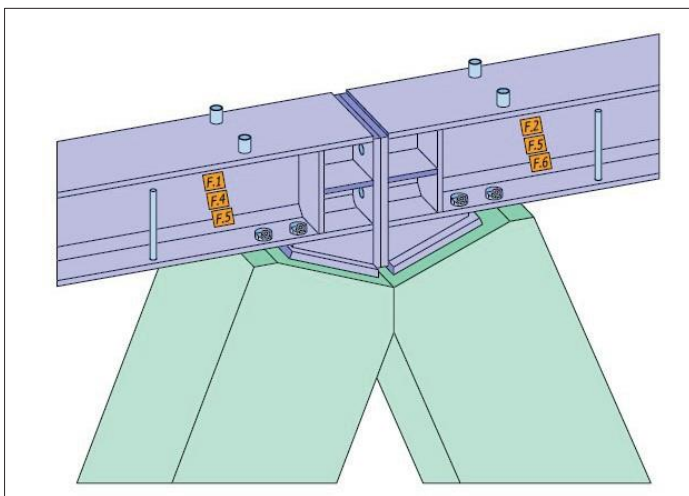
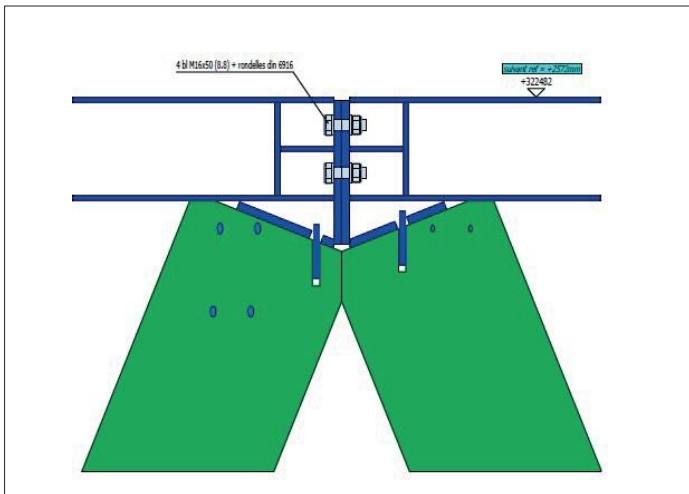


# LIVRAISON SUR CHANTIER AVEC DÉPOSE DE RACKS





# JONCTION DE DEUX FERMES TREILLIS





MISE EN PLACE DES FERMES TREILLIS AVEC ÉTANÇONS







# VOILES BÉTON PREFAB

4

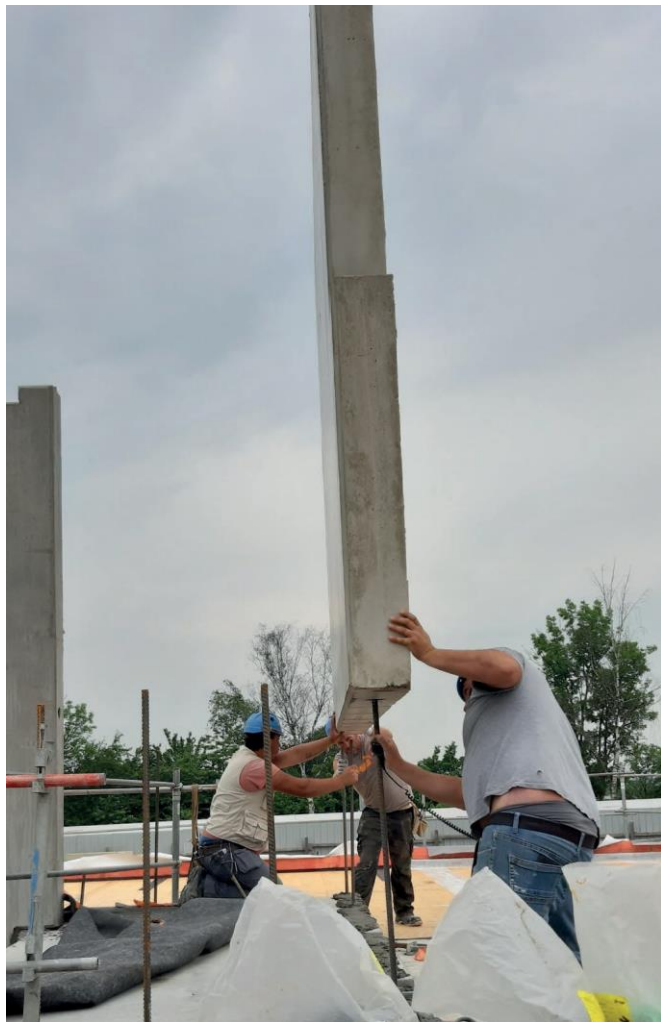


NOYAUX BÉTON À L'AVANCEMENT NIVEAU PAR NIVEAU





# CONNECTIONS SOUDÉES AU LIEU DE BARRES EN ATTENTE





THANK YOU

